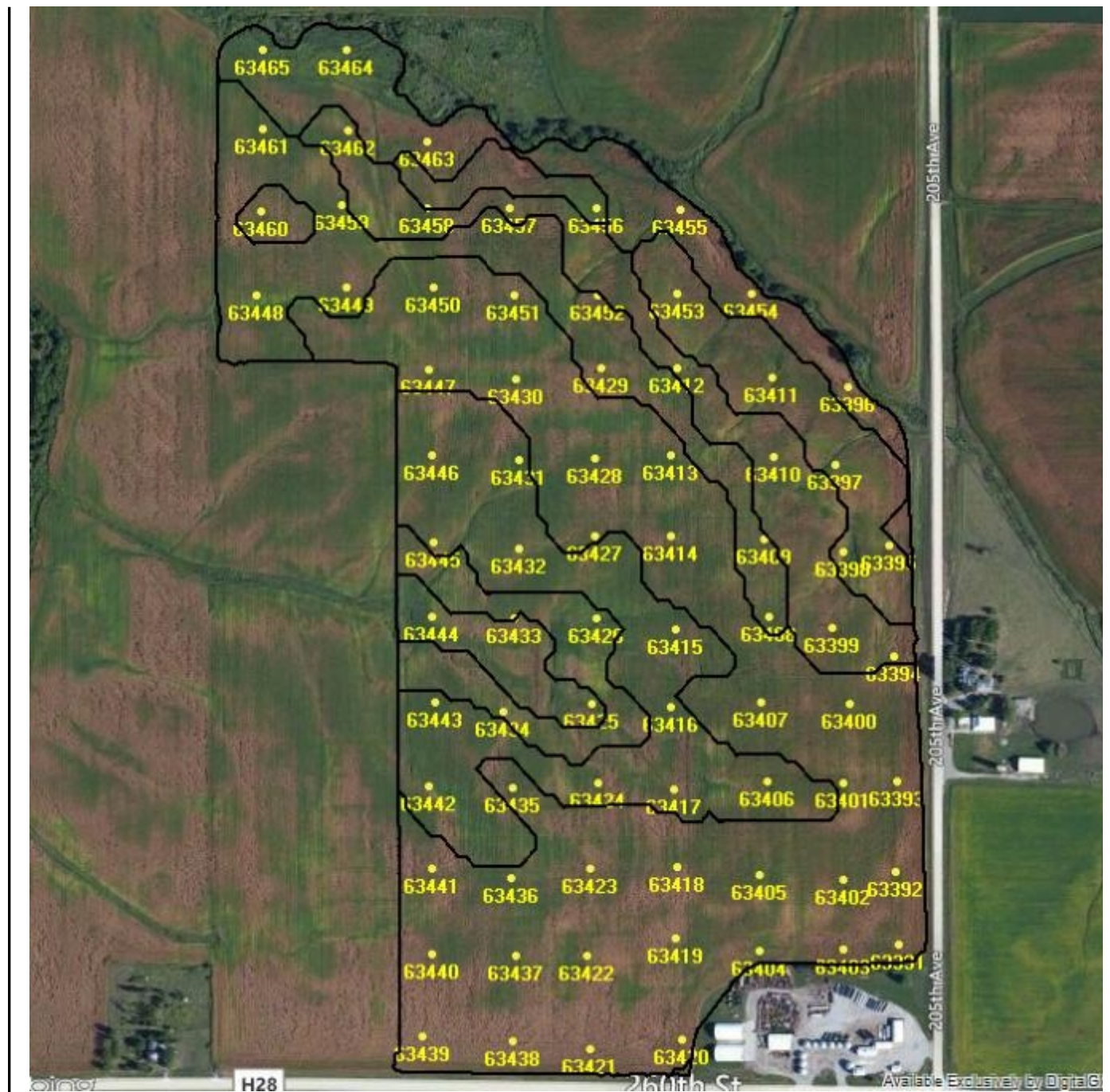


Penny-Pinching Paul | Demo Data

Sample No

Home Farm | North of Crib | 2009 | 153.2 acres

Field Sampled on 10/8/2007



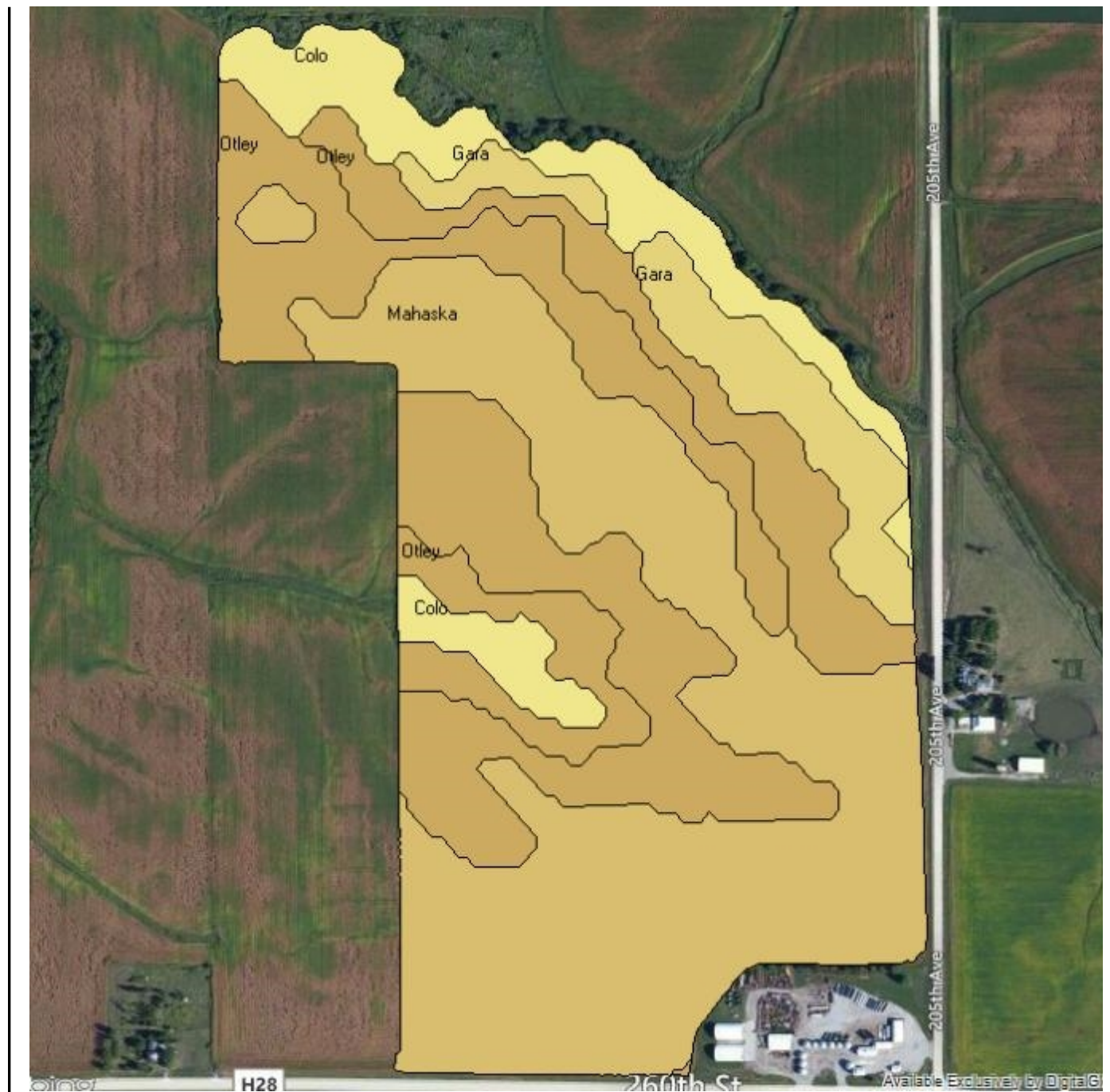
Maps as of 10/20/2014

Penny-Pinching Paul | Demo Data

Soils

Home Farm | North of Crib | 2009 | 153.2 acres

Field Sampled on 10/8/2007



Soils

- Colo (16.81 acres)
- Gara (11.59 acres)
- Mahaska (64.35 acres)
- Otley (60.46 acres)



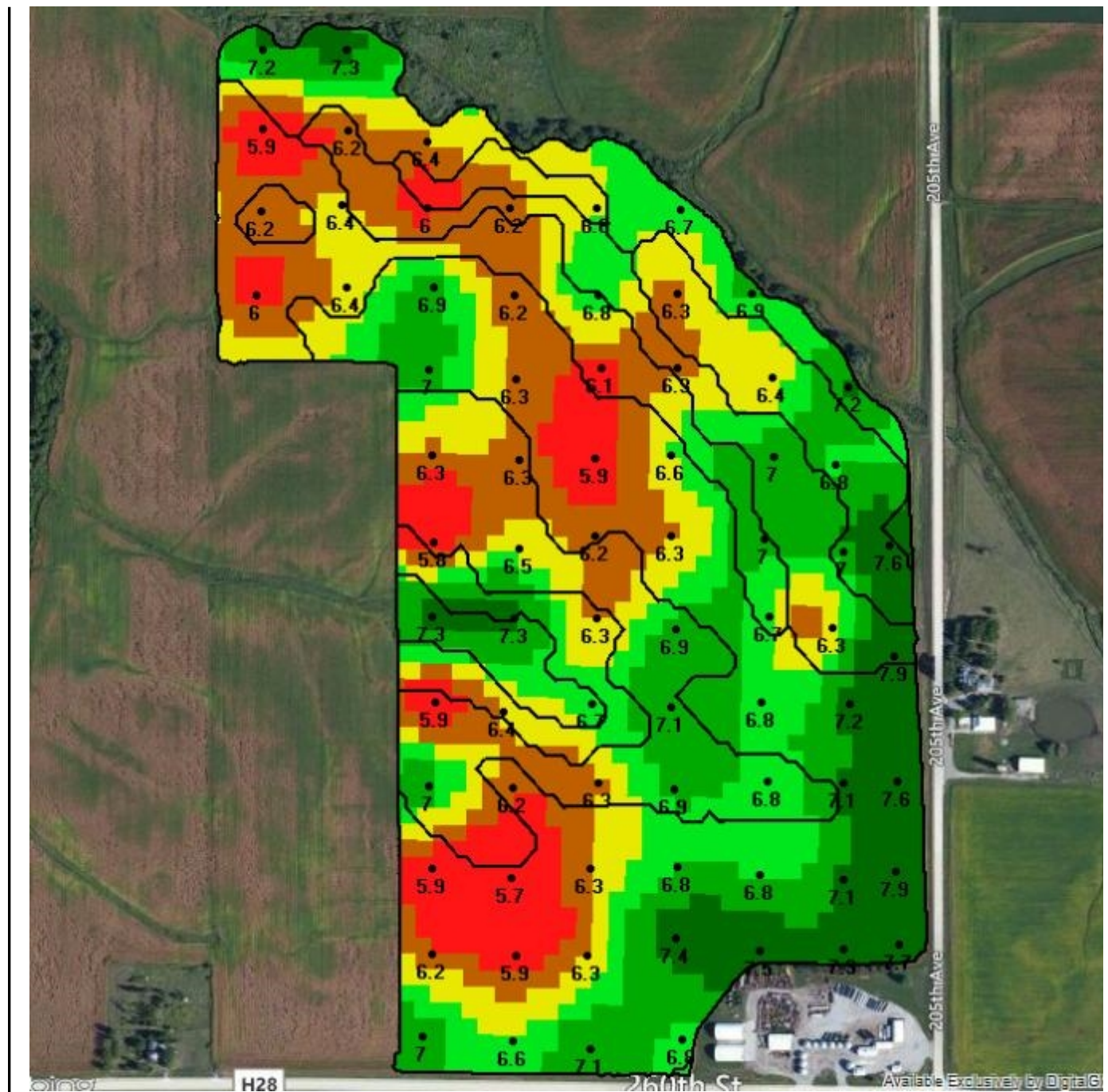
Maps as of 10/20/2014

Penny-Pinching Paul | Demo Data

Home Farm | North of Crib | 2009 | 153.2 acres

Field Sampled on 10/8/2007

pH



pH

| |
|--------------------------|
| 5.8 to 6.2 (15.25 acres) |
| 6.2 to 6.4 (30.63 acres) |
| 6.4 to 6.6 (30.59 acres) |
| 6.6 to 6.8 (30.58 acres) |
| 6.8 to 7.1 (30.61 acres) |
| 7.1 to 7.9 (15.55 acres) |

Min: 5.8

Max: 7.9

Avg: 6.6



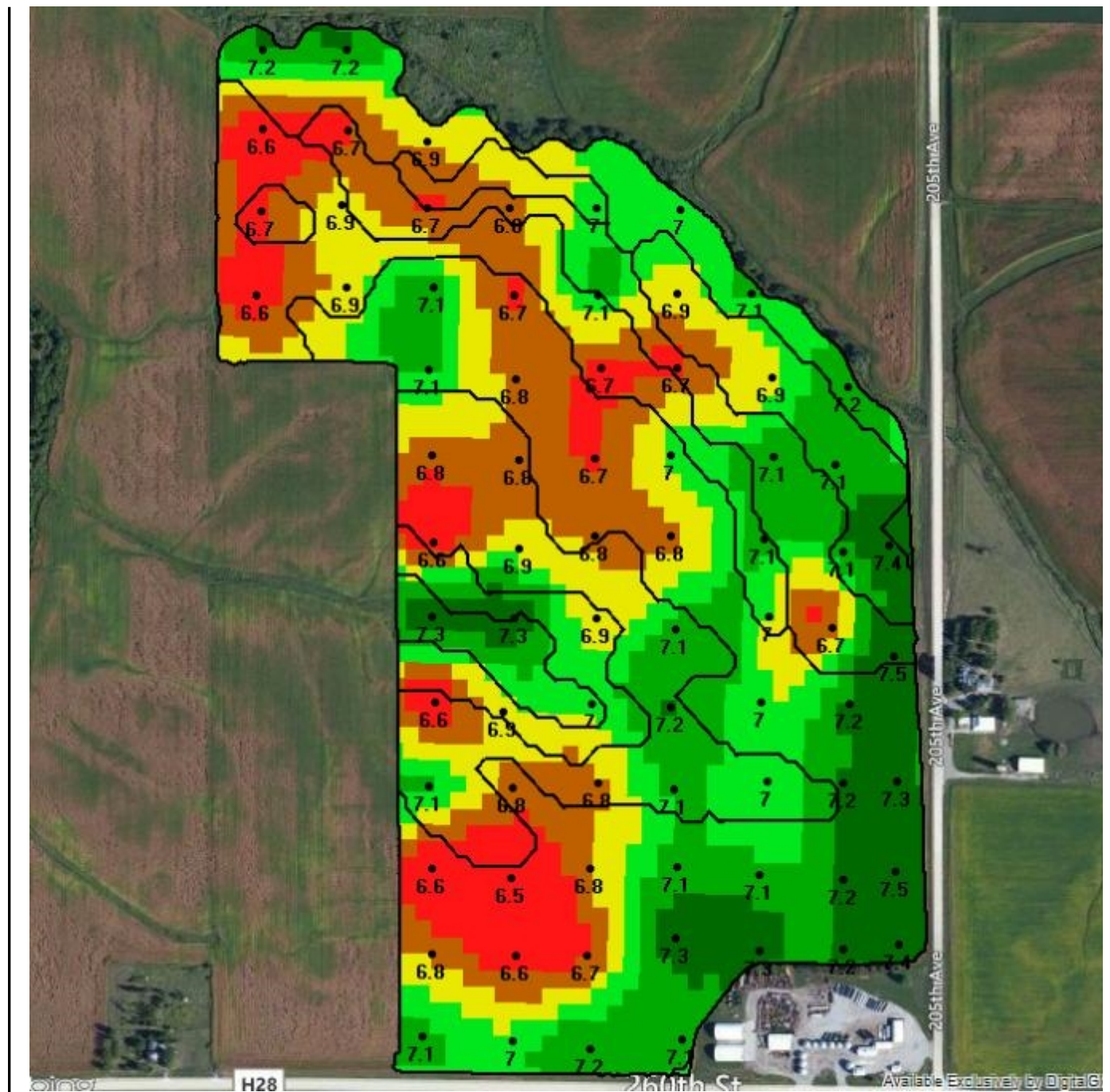
Maps as of 10/20/2014

Penny-Pinching Paul | Demo Data

Home Farm | North of Crib | 2009 | 153.2 acres

Field Sampled on 10/8/2007

Buffer pH



Buffer pH

- 6.5 to 6.7 (15.3 acres)
- 6.7 to 6.9 (30.61 acres)
- 6.9 to 7 (30.63 acres)
- 7 to 7.1 (30.61 acres)
- 7.1 to 7.2 (30.64 acres)
- 7.2 to 7.5 (15.43 acres)

Min: 6.5

Max: 7.5

Avg: 7



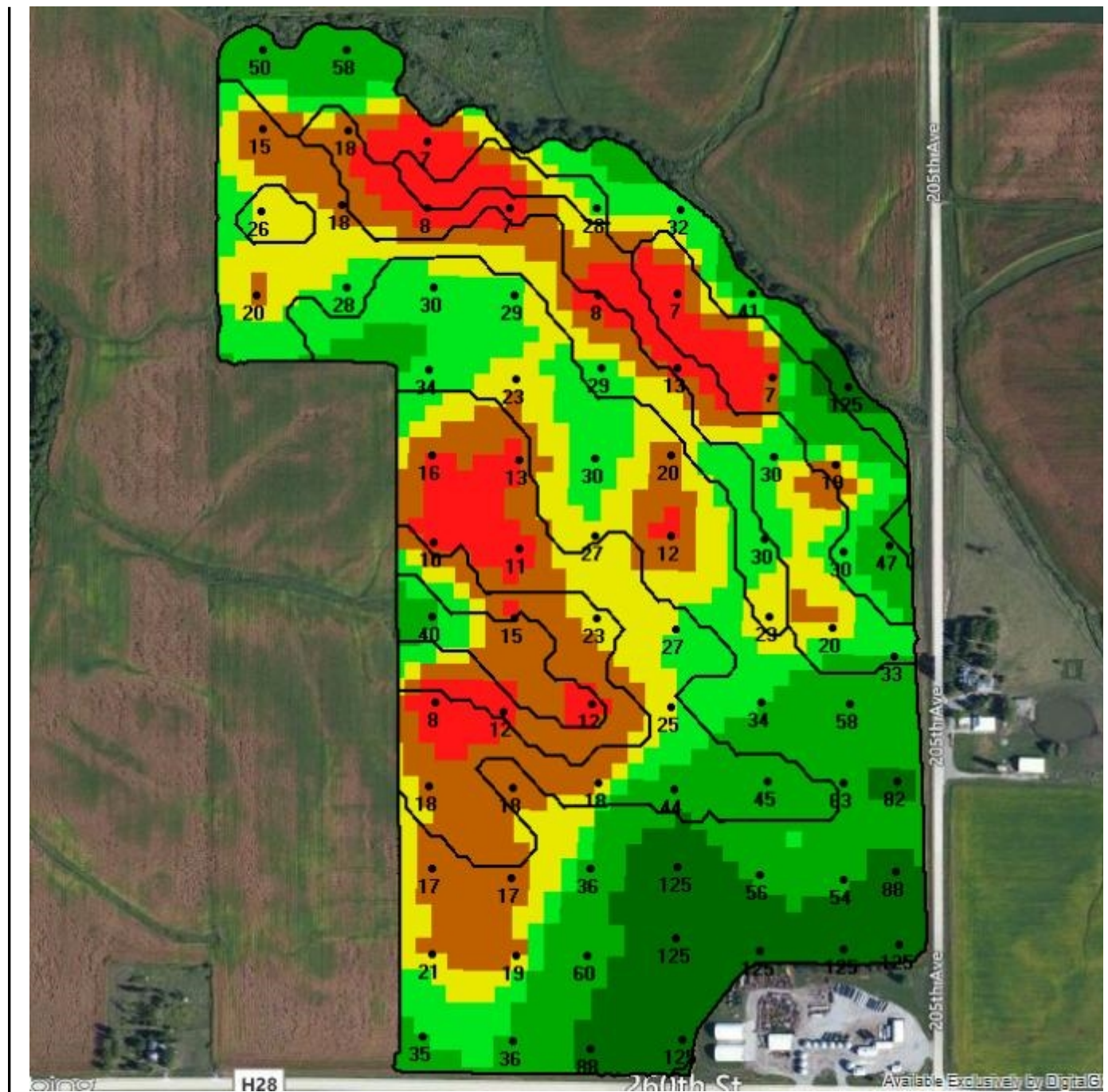
Maps as of 10/20/2014

Penny-Pinching Paul | Demo Data

Home Farm | North of Crib | 2009 | 153.2 acres

Field Sampled on 10/8/2007

P(ppm)



| P(ppm) | |
|---|-------------------------|
| ■ | 6 to 16 (15.26 acres) |
| ■ | 16 to 22 (30.61 acres) |
| ■ | 22 to 28 (30.62 acres) |
| ■ | 28 to 35 (30.63 acres) |
| ■ | 35 to 73 (30.59 acres) |
| ■ | 73 to 123 (15.51 acres) |

| |
|------------|
| Min: 6.1 |
| Max: 122.7 |
| Avg: 36.8 |



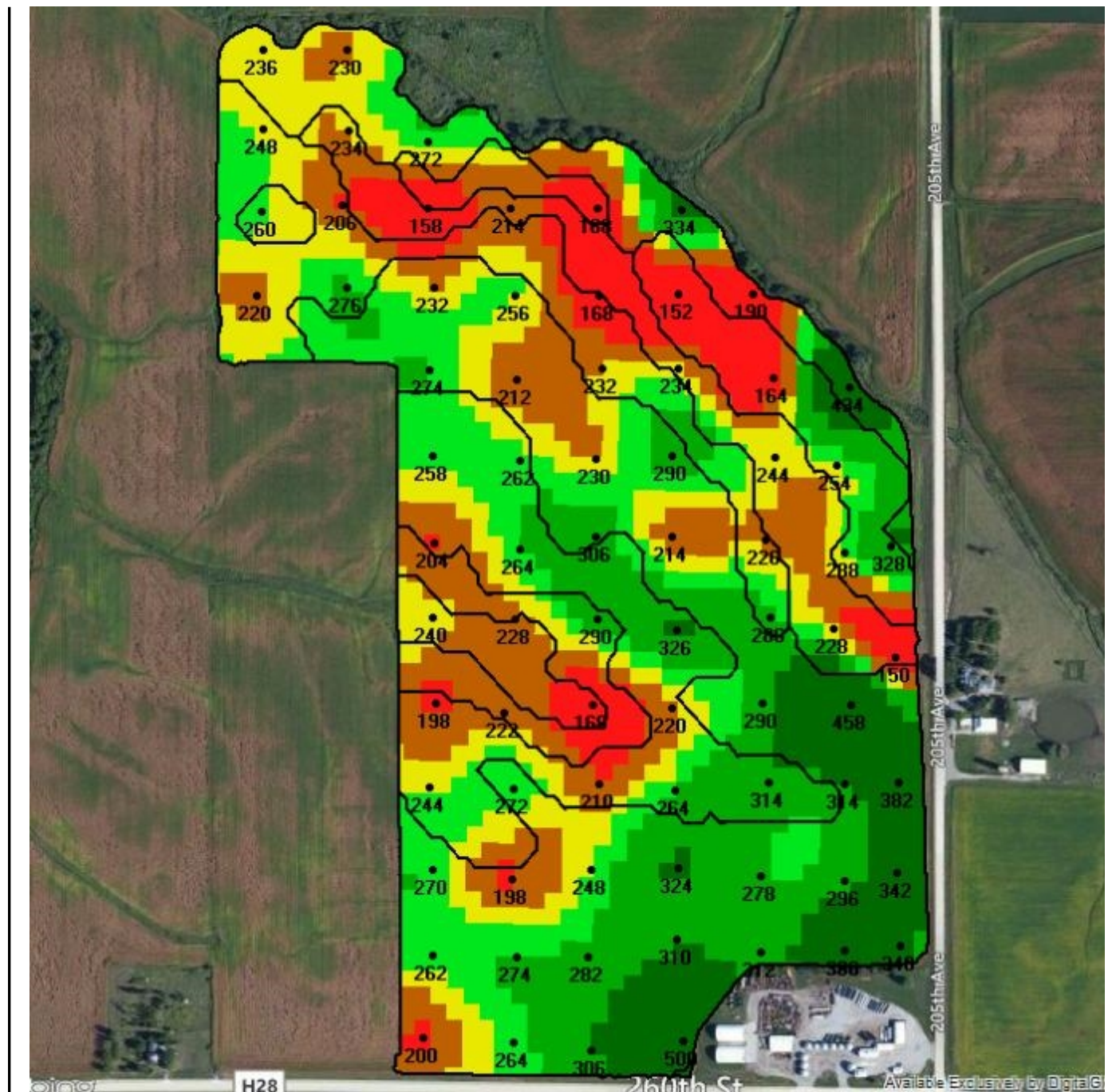
Maps as of 10/20/2014

Penny-Pinching Paul | Demo Data

Home Farm | North of Crib | 2009 | 153.2 acres

Field Sampled on 10/8/2007

K(ppm)



| K(ppm) | |
|--------------------------|--|
| 152 to 211 (15.3 acres) | |
| 211 to 235 (30.56 acres) | |
| 235 to 252 (30.62 acres) | |
| 252 to 273 (30.61 acres) | |
| 273 to 314 (30.58 acres) | |
| 314 to 487 (15.54 acres) | |

| |
|------------|
| Min: 151.6 |
| Max: 487 |
| Avg: 260.2 |



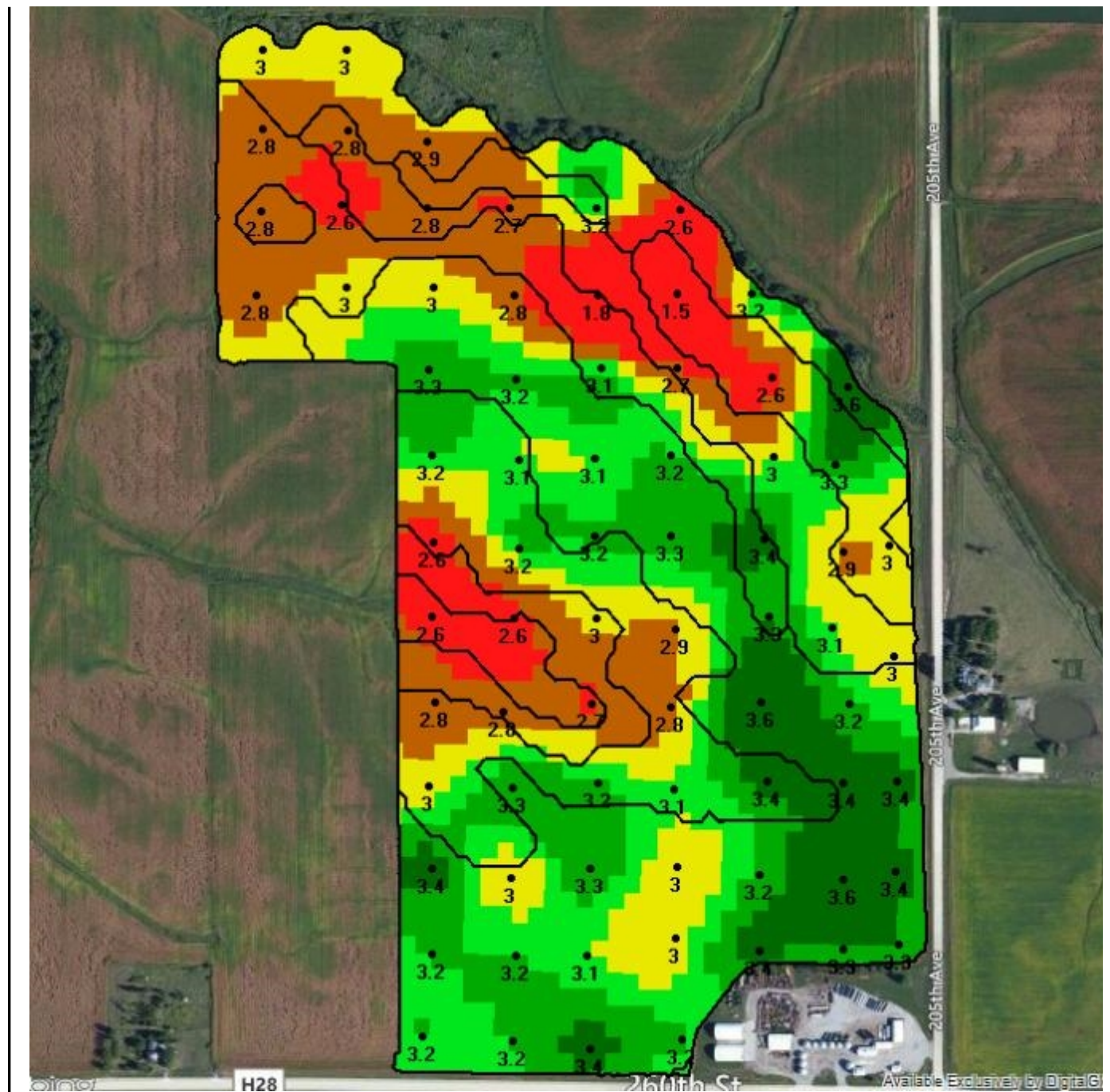
Maps as of 10/20/2014

Penny-Pinching Paul | Demo Data

OM

Home Farm | North of Crib | 2009 | 153.2 acres

Field Sampled on 10/8/2007



OM

- 1.6 to 2.7 (15.27 acres)
- 2.7 to 2.9 (30.58 acres)
- 2.9 to 3.1 (30.64 acres)
- 3.1 to 3.2 (30.56 acres)
- 3.2 to 3.3 (30.58 acres)
- 3.3 to 3.6 (15.58 acres)

Min: 1.6

Max: 3.6

Avg: 3



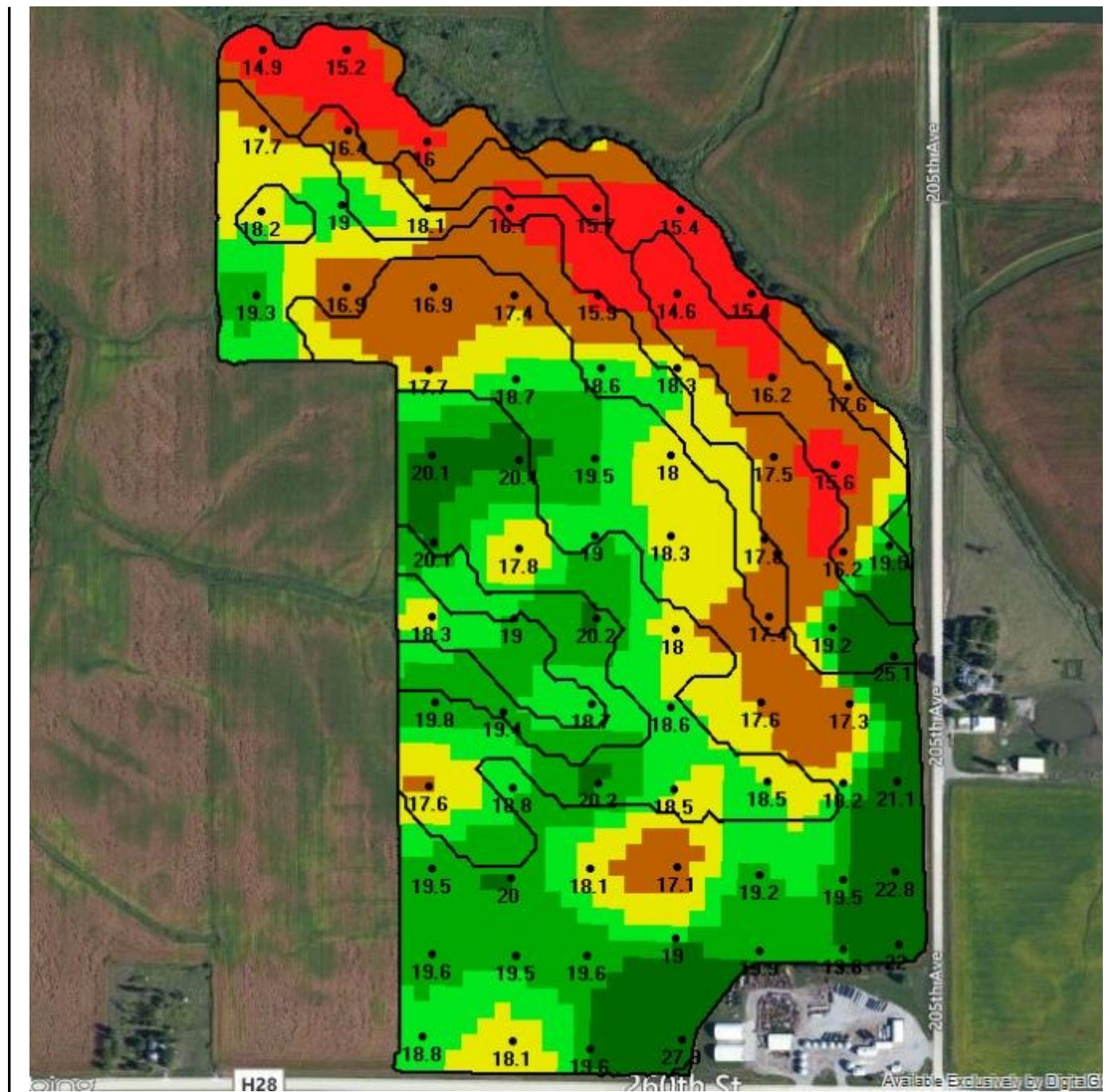
Maps as of 10/20/2014

Penny-Pinching Paul | Demo Data

CEC

Home Farm | North of Crib | 2009 | 153.2 acres

Field Sampled on 10/8/2007



CEC

- 14.7 to 16.6 (15.3 acres)
- 16.6 to 17.8 (30.6 acres)
- 17.8 to 18.5 (30.62 acres)
- 18.5 to 19 (30.63 acres)
- 19 to 19.9 (30.61 acres)
- 19.9 to 27.4 (15.45 acres)

Min: 14.7

Max: 27.4

Avg: 18.5



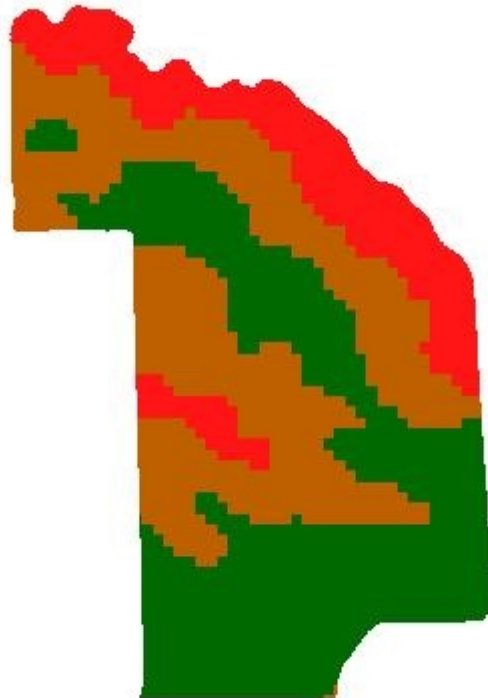
Maps as of 10/20/2014

Penny-Pinching Paul | Demo Data

Home Farm | North of Crib | 2009 | 153.2 acres

Field Sampled on 10/8/2007

NutrientsMgmtZones



OM

- 205.00 to 226.00 (28.7 acres)
- 247.00 to 247.00 (60.3 acres)
- (0.0 acres)
- (0.0 acres)
- (0.0 acres)
- 253.00 to 253.00 (64.2 acres)

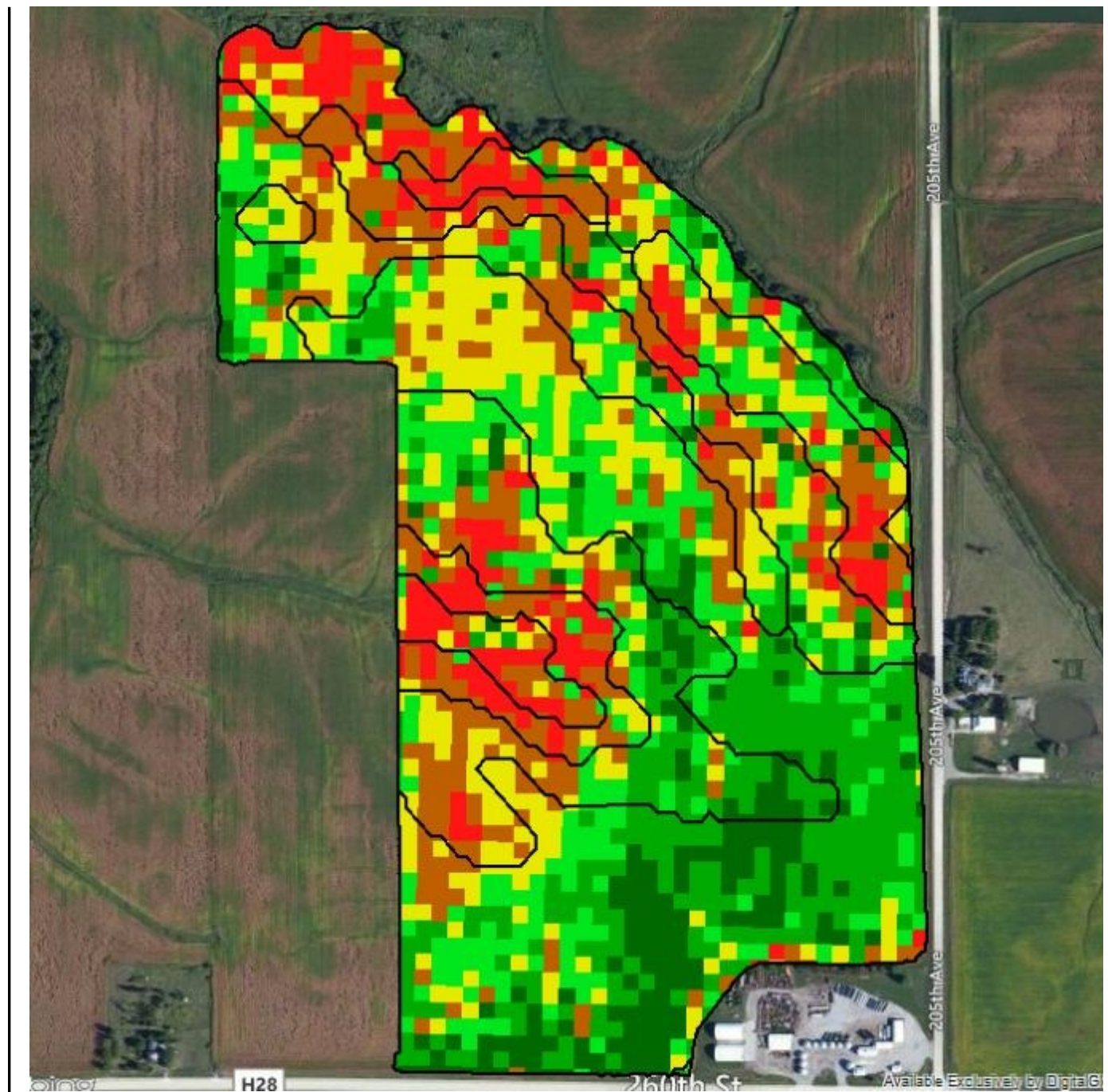


Penny-Pinching Paul | Demo Data

Yield

Home Farm | North of Crib | 2009 | 153.2 acres

Field Sampled on 10/8/2007



Yield

| |
|--------------------------|
| 181 to 233 (15.28 acres) |
| 233 to 245 (30.62 acres) |
| 245 to 252 (30.59 acres) |
| 252 to 258 (30.6 acres) |
| 258 to 266 (30.64 acres) |
| 266 to 328 (15.48 acres) |

Min: 181.2

Max: 328.5

Avg: 250.9



Maps as of 10/20/2014