

Cover Crop and Soil Health Field Day

Highlights include no-till seeding cover crops, rainfall simulator, water infiltration tests, & more

DATE: April 12th, 2017

TIME: 5-8 pm

LOCATION: Pine Island area farmer, Tom Pyfferoen will be hosting this field day at his farm.
53249 275th Ave, Pine Island, MN 55963 (see map on page 2)

ABOUT THE FARM

- Alfalfa, no-till corn and soybean grower. Beef cattle producer.
- Uses a customized conventional split row planter to no-till seed cover crops following corn and soybean harvest.
- Has grown wheat, cereal rye, rape, turnips, and crimson clover as cover crops.



WHAT YOU'LL LEARN

- How Tom integrates cover crops into his no-till system.
- Soil pits will demonstrate the soil health benefits his system has produced.
- Learn how to do a rainfall infiltration test.
- A rainfall simulator will show how differently managed soils impact runoff and infiltration.
- How to manage cover crops with herbicides to avoid residual impacts.

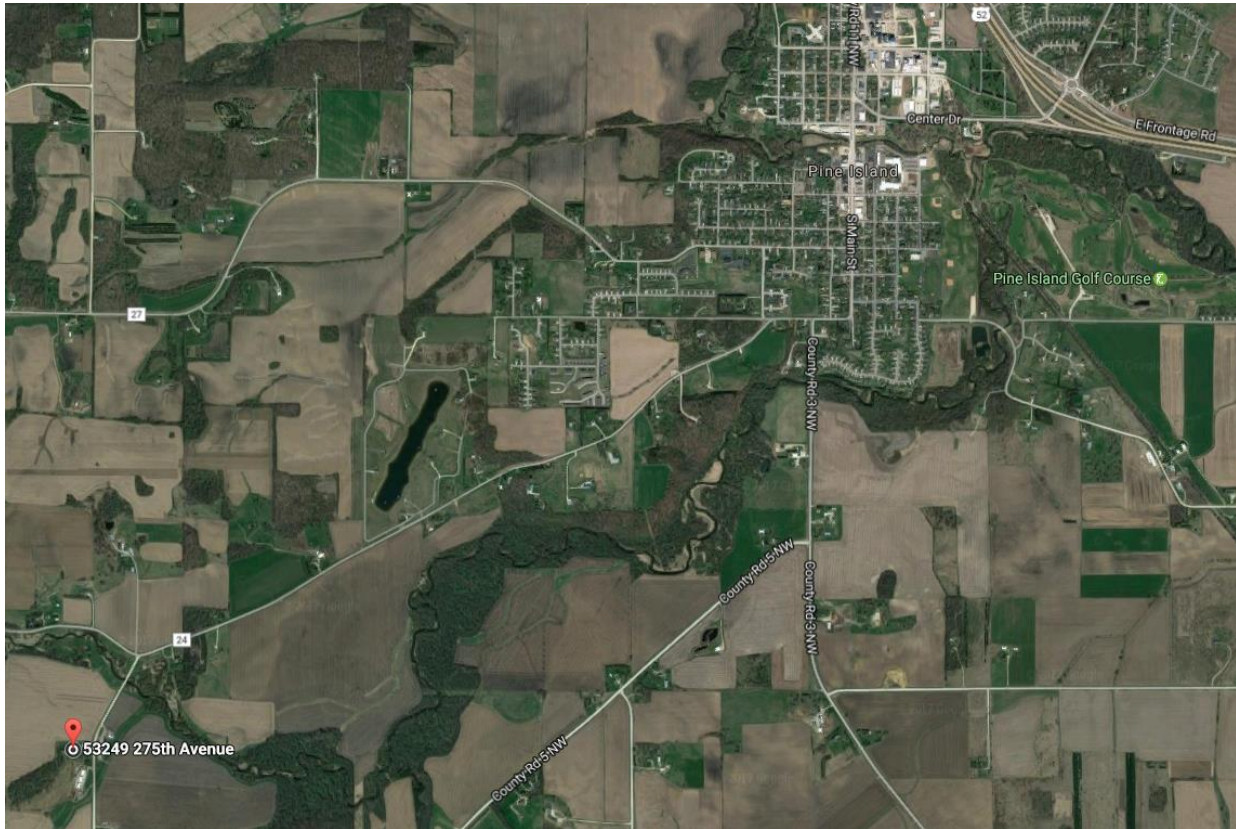
SPEAKERS

- Tom Pyfferoen - Farmer
- Dean Thomas - Soil Health Technician
- Dan Nath - NRCS Soil Scientist
- TJ Kartes - Saddle Butte Ag

OTHER DETAILS

- No charge
- **Pre-registration is strongly encouraged, but not required**
 - Register online <http://z.umn.edu/cc17>
 - Call Winona County Extension 507-457-6440

MAP



QUESTIONS?

- Contact Jake Overgaard, UMN Extension Educator
 - over0128@umn.edu
 - 507-457-6440

