

Never Idle at Ag Partners

By Bill Ahlbrecht, CEO/General Manager

This quote by John D. Rockefeller is absolutely right in line with how Ag Partners views change. We have a certain passion to improve our ability of building ourselves into a better company.

“
Don't be afraid
to give up the
good to go for
the great.
John D. Rockefeller

Change here at Ag Partners is continuous! Over this past month of April, we experienced two different examples of transactions with which we expect to make what was good, even better.

- The first is that we closed on the sale of our convenience stores to Casey's in Wanamingo and Belle Plaine. Both stores operated profitably for us, however we always knew that operating convenience stores was not within our core business of providing value to our ag customers. This significant sale will redirect funds to areas of the company that we believe will add more value to you in the years ahead.

- The second is that we have closed on the purchase of the remaining half of our LLC Partnership with Western Wisconsin Ag Supply, LLC and our partners John Nugent and Mike Lansing. This business has been an excellent part of our agronomy department and we expect that to continue under our sole ownership. The partnership started in 1999 and blossomed into a great relationship that continues to this day. We want to thank John and Mike, along with their families for our friendships and the great business model that grew together beyond any of our expectations. Ag Partners will continue operating the location as Western Wisconsin Ag Supply through August 31st - our fiscal year end. During that time invoicing will also continue to be as Western Wisconsin Ag Supply. Starting on September 1st we will finalize the transition and billing to Ag Partners.

It seems that change is inevitable here at Ag Partners and we certainly hope that we can continue to make this good company great.

I hope you have a very safe and great planting season.

Bill Ahlbrecht

What's Inside

Spotlight	2
Agronomy	4
Animal Nutrition	6
Energy	9
Grain	10
Recipe Corner	12

Ag Partners #FarmerStrong

Agronomy Farm Supply Log in
Feed Grain Careers
Energy Cash Bids Weather

Our **Le Center** location also carries feed! The warehouse stocks poultry, pet, wildlife and livestock feeds. You can find portable LP tanks, softener salt, gloves, wood chips, salt licks, mineral tubs and specialty items.

NEW options for goats starting with our Ag Partners pelleted kid starter, grower/finisher and breeder options for both meat goats and lactating dairy goats. Other brands are also available for both commercial and show goat herds. To compliment the complete feeds, we offer DuraFerm mineral and protein tubs. Check out all options for other species, too!

507-357-6868 1273 W Derrynane St., Le Center, MN 56057

Feeding the precise nutrition of DuraFerm® Goat Concept•Aid® mineral can help support your goats this spring and summer. And with it being DuraFerm's best-seller, what's not to love??



Take a look at this best-selling product to:

- Enhance digestion
- Provide high levels of vitamin E for reproductive tract repair
- Support embryo production & conception using organic trace minerals

SPOTLIGHT: Ag Partners Farm Stores >

By Terra Wierson, Communications Specialist

Belle Plaine Town & Country Hardware Hank and Cannon Falls, Lake City, Ellsworth, Pine Island and Plainview Farm Store are our current primary retail locations. Of course you can purchase a bag of bird seed, pet food, work gloves or pest control at just about any of our Ag Partners locations across Southern Minnesota and Western Wisconsin, but these retail hubs provide so much more. Each carry specialty and seasonal items, pet supplies, clothing, outerware and home decor. Most fill portable propane tanks for your grill or RV. And all are associated with our feed department, accomodating large bulk orders or walk-in customers looking for a few bags of show feed. Company-wide we work towards exceptional customer service and high quality products. Our farm stores are no exception to that.

Ag Partners farm stores hold family oriented events and public seminars throughout the year, and run specials which are posted in store and/or on their own facebook page.

Belle Plaine Town & Country Hardware Hank

Shares a building with Belle Plaine's agronomy office.

Logistics:

820 East Main St, Belle Plaine, MN 56011

952-873-3244;

TownandCountry@agpartners.net

Hours: Monday - Friday 8am - 7pm

Saturday 8am - 5pm; Sunday 9am - 5pm

Store Manager: Susan George

Ammenities: Tool & equipment rental, hardware, paint & stain, household items & decor, garden center, pet and bird feed & supplies, livestock & poultry feed & supplies, outdoor grills & smokers, propane, clothing, boots, gloves, toys, seasonal, special orders, agronomy office.

Specialty: live chicks in the spring, Santa visit in the winter. Agronomy office on site.



Cannon Falls Farm Store

Grain elevator on site

Logistics:

712 St. Clair Street W, Cannon Falls, MN 55009

507-263-4651; CannonFallsStore@agpartners.net

Hours: Monday - Friday 8am - 5pm

Saturday 8am - 12pm

Store Manager: Willie Anderson

Ammenities: Oils, lubes & refined fuels, pet and livestock feed, specialty feeds & wood shavings, fencing products, poultry supplies, seasonal indoor & outdoor items, lawn care, work gloves, softener salt, home pest control supplies. Agronomy, feed & grain also on site.

Specialty: local, handmade birdfeeders, horse & show supplies. Grain elevator on site.



Ag Partners #FarmerStrong

Agronomy

Feed

Energy

Farm Supply

Grain

Cash Bids

Log in

Careers

Weather

Ellsworth Farm Store

Feed warehouse on site

Logistics:

290th North Morse Street, Ellsworth, WI 54011
715-273-5066

Hours: Monday - Friday 8am - 5pm

Store Manager: Lincoln Purfeerst

Ammenities: : Feed, minerals, supplies for pets, horses, cattle, poultry & sheep & goat, wild bird seed & feeders, lawn & garden, food plot seed, deer feed products and propane.

Specialty: Horse feed, show feed, food plot & lawn seed, and fertilizer. Ellsworth Farm Store was recently known as Western Wisconsin Nutrition LLC. In September 2022 the LLC sold its half of the partnership to Ag Partners. Ag Partners is excited to have this store and the additional warehouse in Maiden Rock!



Lake City Farm Store

Grain elevator on site

Logistics:

512 8th Street, Lake City, MN 55041
651-345-3328; LakeCityStore@agpartners.net

Hours: Monday - Friday 7:30am - 5pm

Store Manager: Justin Stumpf

Ammenities: special orders, fencing products, work gloves, horse, pet, poultry & livestock feed and supplies, home, lawn & garden, seasonal. Agronomy & Feed offices & grain elevator on site.

Specialty: specialty & show feeds & supplies, LP equipment & tanks, refined fuels & energy hub.



Pine Island Farm Store

Grain elevator & feed mill on site

Logistics:

417 N Main St, Pine Island, MN 55963
507-356-8313

Hours: Monday - Friday 7:30am - 5pm

Store Manager: Colton Risty

Ammenities: work boots, gloves, special orders, livestock feed, Tuffy's & Nutri Source dog & cat food, animal & farm supplies, fencing supplies, seasonal & home items.

Specialty: live chicks in the spring, LP equipment & tanks, refined fuels & energy. Agronomy & Feed office, feed mill and grain elevator on site.



Plainview Farm Store

Feed warehouse on site

Logistics:

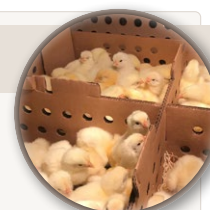
140 3rd Street SW, Plainview, MN 55964
507-534-2531; PlainviewStore@agpartners.net

Hours: Monday - Friday 7:30am - 5pm
Saturday 7:30 - 11 am

Store Manager: Jasmine Klavetter

Ammenities: Fencing supplies, animal health & nutrition, softener salt, lawn & yard maintenance, wild bird feeders & food, specialty & show feeds, special orders, home pest control, work gloves.

Specialty: live chicks in the spring. Poultry feed & supplies. Pet food & pet care supplies.



Agronomy Application TECHNOLOGY >

By Casey Carlson, AYS Manager

It seems like we are in the middle of an explosion of new technological ideas for custom fertilizer and chemical application that will be coming.

These changes will include, but not be limited to Autonomous Sprayers and Fertilizer Spreaders, See & Spray Technology and Spray Drones. This technology has advanced to the point that Ag Partners is testing and observing all these different application options that will solve your application needs precisely and economically in the future. Some of our personnel have and will continue to be involved in the development of ideas and field testing these units. Ag Partners has purchased a couple of Spray Drones that we will test this summer.

A few of our customers have been considering, or have already purchased, a drone and will be experimenting with them, too. There are several brands and models to choose from, but here are a few tips that may help as you consider a drone for your fungicide application.

- All drone operators will need a part 107 and part 137 certification from the FAA to legally apply chemicals from a drone.
- You will need to follow pesticide labels for aerial application. Not all pesticides are labeled for aerial application.
- You will need to pre-load field hierarchies and boundaries into your drone flight plan software to efficiently spray your fields.
- You will need to have a plan in place for your filling and battery charging system in the field, along with the capability for drone maintenance.



DJI Agrus T-40 Aerial Application Drone

With these new technologies we expect we will need to conquer the learning curve that it will take to augment our current application processes. *We will all need to proceed cautiously!*



Partnering our forage specialists with our data driven Advanced Yield System program, we introduce the next step:



With this we have the ability to put your farm data to work and take plant nutrients a step further.

HERE'S HOW IT WORKS

Current AYS customers can add on this all-inclusive program for an additional cost/acre.

SAMPLING:

- ▶ Samples taken by farm
- ▶ Pre-labeled sample bags provided
- ▶ Forage Sampled by field and crop
- ▶ Samples submitted by Ag Partners

DATA:

- ▶ All forages included
- ▶ Field yield data
- ▶ Nutrient data
- ▶ Cover crop & double crops evaluation

ANALYSIS:

- ▶ Nutrient yield by crop
- ▶ Agronomic practices
- ▶ Current & future season comparison
- ▶ Benchmarking data*

**based on availability*

Ag Partners #FarmerStrong

Agronomy
Feed
Energy

Farm Supply
Grain
Cash Bids

Log in
Careers
Weather

Maximize Profits with Crop Management >

By Ryan Ness, Assistant Agronomy Manager, East



Summer Management Ideas

As I write this, we are waiting for temperatures to rebound and the Mississippi river to crest. We saw a flurry of activity during our week of 80-degree weather in early April. Since then, the weather has not been very conducive for field work. Hopefully, by the time you read this, we will have been planting and maybe even wrapping up. I am going to focus on the great growing season we have ahead of us and stay glass half full. Here are a couple of activities to focus on this summer.

Side-Dress Nitrogen Applications

Each year we continue to increase our side-dress nitrogen applications. We continue to see enhanced nitrogen use efficiency and higher yields. One of the greatest benefits is the ability to respond to environmental conditions between planting and side-dressing. It is a great risk management tool. Not having all the nitrogen applied at preplant minimizes loss to leaching or excess moisture. Application rates can be adjusted accordingly. Another benefit is the ability to apply some sulfur ahead of tasseling. Having sufficient sulfur levels ahead of tasseling maximizes the utilization of nitrogen within the corn plant. Sulfur is critical for high yielding corn, and we continue to see yield responses increasing each year. We target rates of 30-40 pounds of sulfur annually.

On the west side of our region, we continue to see variable

rate side-dress applications increase. We are grid sampling for nitrates. We then base our application rates off the sample results. This provides a real-time snapshot of the nitrate available compared to how much is needed per the given growth stage of the corn plant. If you are not side-dressing nitrogen and have interest, please visit with your agronomist.

Fungicide Applications

With the rapid increase of Tar Spot in corn in southeast Minnesota in 2022, planned fungicide applications have grown significantly. Tar Spot, like any other disease, needs the correct environment to develop. That said, we have seen increases in affected acres each year. In 2022, we watched corn fields southeast of Rochester consumed in a matter of weeks. Fungicide is the first line of defense in protecting against Tar Spot. Applications are targeted from flag leaf through brown silk. We work closely with aerial applicators to service the acres sprayed by Ag Partners. Many already have orders placed for this summer. Anyone who would like to learn more, please contact your agronomist.

I would be remiss if I did not mention the importance of fungicide on soybeans as well. Tar Spot has used up most of the oxygen in the room, but soybean applications have had the most consistent ROI from the applications we have made, excluding Tar Spot. We typically see 4-5 bushel increases. Most high yield management systems incorporate a fungicide application. We target this application during the R3 growth stage, typically mid-July.

These two applications could have a dramatic effect on the outcome of your crop this year. Knowing weather has the greatest influence on what we try to accomplish, having the ability to respond to what we are presented with is a great way to manage that risk. Please reach out to your agronomist to learn more about incorporating these practices on your farm.



Tar spot from 2022 crops >

DAIRY Economic Situation

\$430 Soybean Meal, \$16 Milk >

By Kyle Mathews, Dairy Consultant



Tunnel ventilation, sand beds and excellent stall usage helps maximize cow comfort & laying time.

If you do decide to make ration cuts, knowing where you were and where you are after is paramount. One would hate to cut 30 cents a day in feed, but lose 40 cents in milk revenue. **Don't sacrifice long term performance** for short term savings. Cutting cost out of a replacement heifer program can set you up for poor milk starts and peaks in your 1st lactation animals down the road.

As always, seek other ways to increase margins from milk. **Managerial changes often drive higher milk margins** at a very low cost. Ensuring feed pushups are adequate (strong intakes), breeding cows on time (Avoiding long DIM) drying up on time (less trans cow metabolics), and keeping the forage pad clean (reduced shrink) will always pay dividends with very little extra expense.

Lastly, continually focus on making the highest **quality forage** possible. Corn silage that is 35% dm, >60% NDFD30, and kernel's that are well processed will make more milk than feeding 10 more grams of lysine. Haylage with high digestibility, low uNDFom240 and ash will increase caloric intake. Dry corn <500 micron, or high moisture corn at >28% moisture that is well processed will reduce fecal starch. \$6 corn is too expensive to put in the lagoon!

Please reach out to me if you have any questions. -Kyle
kylem@agpartners.net, 651-923-6001

Ag Partners aims to help you reach YOUR goals with our expertise and quality of products you need to keep your livestock healthy and profitable.

2022, for most, was a very profitable year with strong milk prices and reasonable feed costs. That has changed in a hurry with Class III May milk at \$16.69. With Chicago Mercantile Exchange soybean meal hovering at \$430 we know the margins have gotten tighter. However, it's not the first time this situation has happened, and the last thing we need is to be "doom and gloom." We need to **control what we can control**, and know our numbers to evaluate cow and financial performance.

Energy Corrected Milk Feed Efficiency is an easy metric to evaluate conversion of feed to energy corrected milk. Higher is better, but a **1.7:1 efficiency is a good goal** to set. A 1.5 warrants finding the bottleneck as to why she is not producing more for what you are feeding her. Income over feed cost reflects our profit margin obtained after she consumes that feed.

BOTTOM LINE TIPS:

1. Reduce **feed shrink** as much as possible. On extremely well managed farms, feed shrink can still cost \$0.25-\$0.30/cow/day...
2. Do not give up milk production or components. At today's pricing, strong **focus should be on pounds of solids** shipped per cow.
3. Gain every **efficiency as possible**. Whether it's fuel, labor, or time savings, they'll add up to a significant dollar amount.
4. Continue to **motivate and reward** your strong employees. Their morale starts with yours.

Ag Partners #FarmerStrong

Agronomy	Farm Supply	Log in
Feed	Grain	Careers
Energy	Cash Bids	Weather

It's Show Season >

By Jacole Welter, Feed Manager

Now that spring has sprung and we're in the month of May, an exciting season has started for the next generation of our customers and prospects within the Ag Partners territory, which ranges across Southern Minnesota, Western Wisconsin and even into Northern Iowa. The youth in this region are in the process of identifying their summer show animals and are planning what other fair projects they would like to take to the county fair. Ag Partners is proud to support these youth and county fair events thru being a sponsor of county fairs, attending and participating in ribbon auctions, coaching and judging teams, hosting show meetings and clinics, volunteering at Miracle of Birth Centers, and more.

For show feed, show supplies, tools and advice stop by your local Ag Partners or contact one of our specialists!



Show Feed is available at ALL Ag Partners feed locations. Not sure where those are? See the website for a complete [list and directions at agpartners.net/apgfeed](https://agpartners.net/apgfeed).

Did you know we do not compete between locations? We're all in it together, working for your convenience!

Keep snapping photos for the 2024 calendar!



agpartners.net/calendar-photo-submission

Give it a shot!



SUPPORT OUR YOUNG PEOPLE IN AG. VISIT A COUNTY FAIR THIS SUMMER!

MINNESOTA



Dodge	July 12-16
Waseca	July 12-16
Winona	July 12-16
Fillmore	July 17-23
Rice	July 19-23
Wabasha	July 19-22
Blue Earth	July 20-23
Olmsted	July 24-30
Scott	July 26-30
Freeborn	August 1-6
Dakota	August 7-13
Sibley	August 2-6
Washington	August 2-6
Goodhue	August 8-12
Mower	August 8-13
Nicollet	August 9-13
Steele	August 15-20
Houston	August 16-20
Le Sueur	August 17-20

WISCONSIN

Trempealeau	July 13-16
La Crosse	July 19-23
St. Croix	July 19-23
Dunn	July 26-30
Buffalo/Pepin	August 3-6
Pierce	August 10-13



Chuck Valek is Retiring!

OPEN HOUSE: **May 31, 11a-2p** at Belle Plaine!

820 East Main Street, Belle Plaine, MN



CONGRATULATIONS TO OUR SCHOLARSHIP RECIPIENTS

The Board of Directors of Ag Partners has established a scholarship program for dependent children of Ag Partners qualifying members. \$1,000 awards were again granted this year to students that are high school seniors or recent high school graduates. Eligible applicants are students planning to enroll for the first time in a full-time undergraduate course of study at a two or four-year college, university, or vocational-technical school.

Scholarship recipients are selected based on work experience, volunteering and leadership activities, awards and honors, goals and aspirations, and any unusual circumstances. Recipient selection was made by an independent committee of ag industry representatives viewing un-named applications.

This spring 71 applications were received, and the committee's goal was to award 20 scholarships. The applications were all impressive and showed we have some very promising highschoolers in the area. The committee commented on how difficult this year's selection was. At the end of April applicants were notified of the results, along with the recipients' respective high school.

2023 SCHOLARSHIPS WERE AWARDED TO:

Macy Beltz of Lake City, Colby Brandt of Le Sueur, Natalie Clemenson of Zumbrota, Hunter Conrad of Morristown, Madison Church of Minnesota City, Kaitlynn Corbin of Plainview, Karlie DeGroot of Faribault, Amalia Draxler of Glenwood City, Natalie Dykes of Mazeppa, Lucas Erickson of Cannon Falls, Jamie Gibbs of Rollingstone, Kelsi Goldsmith of Chatfield, Hannah Highum of Peterson, Alexis Hoefs of New Prague, Daelyn Judd of Waterville, Sophia Kamm of New Richmond, Sidney Majerus of Zumbrota, Emma Myren of Nelson, Sommer Olson of Plainview, Julia Patterson of Kenyon, Lauren Rott of Elgin, Jacy Saemrow of Waterville, Evelyn Scheffler of Zumbrota, Lee Siewert of Lake City, Sophie Stelling of Millville, Katrina Uthke of Eyota, and Gavin Warmkagathje of St. Charles.

We have been receiving Thank You notes from students in the program. We appreciate these and share them with the office!




*Save the date for 2023
Customer Appreciation Days*

**Le Center: August 15
Elgin: August 16
Miesville: August 17**

ROADSIDE CLEANUP

On a hot, sunny and windy day mid-April a crew of around 15 took to the ditches along Highway 52 between Zumbrota and Pine Island. The cleanup took around 2 hours and we collected over 25 large bags of trash. We take pride in keeping our roadways clean- and we'll do it again in the fall! Thanks to all of the employees! Not all are pictured here.



Ag Partners #FarmerStrong

Agronomy
Feed
Energy

Farm Supply
Grain
Cash Bids

Log in
Careers
Weather

DIESEL - Shop Talk >

By Matt Hart, Refined Fuels Manager

A common complaint that I hear from customers is that the fuel filter is plugged on their fuel pump. Over time, filters do their job by stopping rust and dirt, but water is another reason filters plug. I recommend taking note of these conversations with Cenex, one of our fuel and lube suppliers, around simple maintenance to keep you up and running:

TOP PROBLEMS CAUSED BY WATER IN DIESEL FUEL

From reduced performance to major engine problems, water contamination is a serious issue for diesel equipment owners. Here are the most common problems that can occur when water contaminates fuel.

- **Microbial growth:** Water is a hotbed for microorganisms. And a microbial invasion can spell disaster for a piece of equipment. These microscopic parasites can plug fuel pumps, injectors and filters, potentially leading to equipment breakdown
- **Fuel filter distortion:** Today's high-performance farm machines have tight tolerances, so fuel filters are essential for keeping impurities out of engines. But if a fuel filter is exposed to water, it becomes distorted, allowing impurities to pass through into the engine.
- **Corrosion:** Last but not least, corrosion is another major problem that can result from water-contaminated diesel fuel. Metal parts, from fuel tanks to injector pumps, can rust if they come into contact with water.

HOW TO KEEP WATER OUT OF DIESEL EQUIPMENT

Your fuel system is bigger than just the fuel line inside your equipment. To keep water out of your machinery, it's important to tackle the problem at its source: your bulk fuel tank. Here are two easy preventive actions.

- **Perform regular bulk tank maintenance:** Keep your operation running smoothly by establishing a bulk tank maintenance routine. A few easy things you can do regularly include draining and cleaning your tank, cleaning the pump screen and changing pump filters seasonally.

- **Make sure that your tank is sloped in the right direction:** A good premium diesel will trap any free water and force it to the bottom of the tank. Once on the bottom of the tank, it will follow gravity and flow to the lowest point. This low point should be on the opposite end of the tank with the pump, otherwise the pump can pull water up. Also, every tank should have a pressurized fuel cap. The old style 'flip caps' do not form a seal on the tank. Cool nights and hot days allow air exchange and condensation will form inside the tank.
- **Collect a tank sample:** Keep a lookout for water in your bulk tank by taking occasional tank samples, which give you a valuable snapshot of the conditions inside your tank. To learn more about tank sampling and to purchase a tank sample kit, contact the Ag Partners Energy department at 651-923-6004.



CHOOSE FUEL THAT FIGHTS WATER FROM THE START

One of the simplest ways to protect your operation from water damage is also one of the most overlooked: fuel selection. Even for experienced farmers, it can be easy to fall into thinking that fuel is fuel — but the truth is, all diesels are not created equal.

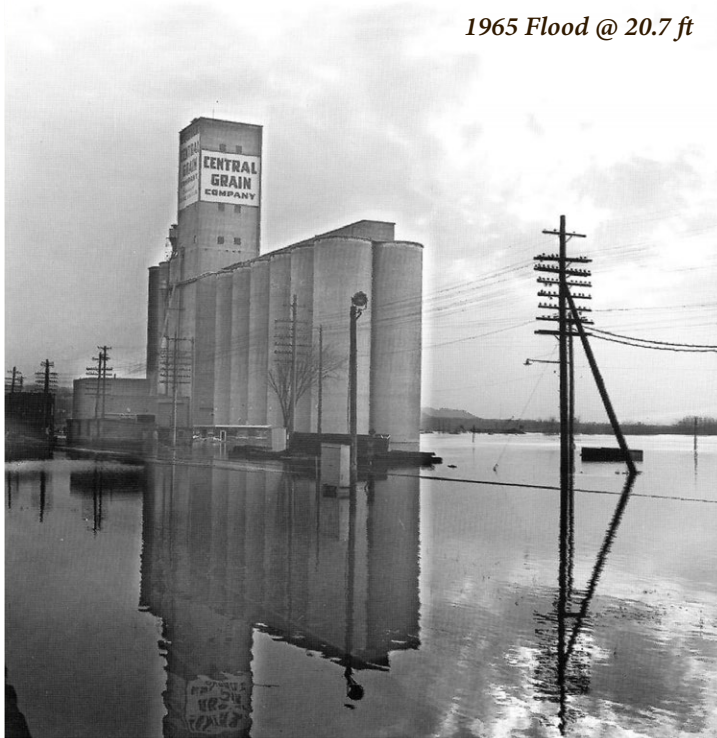
Switching to a high-quality fuel like Cenex Ruby Fieldmaster® Premium Diesel can go a long way toward protecting your operation from water damage. That's because Ruby Fieldmaster contains an industry-leading additive package, including powerful demulsifiers that keep water out of equipment.

Demulsifiers work by separating water from fuel, and they're active even while the fuel sits inside your bulk tank. Thanks to these demulsifiers, extracted water sinks to the bottom of the tank and collects safely beneath the fuel — keeping water from ever entering your equipment in the first place.

Call Ag Partners for your diesel fuel and all of your energy needs! 651-923-6004 -Matt

Preparation for Flooding >

By Jim Larson, Red Wing Grain



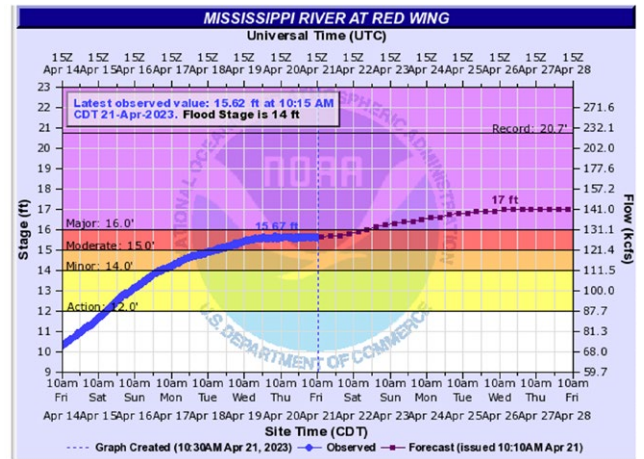
1965 Flood @ 20.7 ft

River levels and the possibility of flooding at barge-loading grain terminals such as our LLC partner, Red Wing Grain along the majestic Mississippi River in Red Wing, Minnesota, is monitored closely. Spring time is the most likely time to have trouble, and with parts of Red Wing under water along the river late April it has certainly been a threat.

How does a large, busy grain facility prepare for this, you might wonder.

Red Wing Grain - Flood Protection Plan

Facilities like the one in Red Wing have flood protocols in place to ensure the grain being shipped does not become damaged, and the elevator can continue operating safely in high water situations. Data from the National Oceanic and Atmospheric Administration (noaa.gov) is used to monitor for key water levels.



Red Wing Grain watches this chart (above) by the hour for new forecasts of cresting and river level changes to prepare for the different levels. This automatic reading gauge is on the dock wall right outside our office. These flood projections also include the 24 hour precipitation forecast. We have a flood plan that is for almost every foot of increase starting at 8 ft. when we need to cap our outlet drainage pipes.

Flood Categories (in feet)	
Major Flood Stage:	16
Moderate Flood Stage:	15
Flood Stage:	14
Action Stage:	12

Historic Crests	
(1)	20.70 ft on 04/18/1965
(2)	18.80 ft on 04/17/1969
(3)	18.20 ft on 04/28/2001
(4)	18.10 ft on 04/17/2001
(5)	17.18 ft on 04/12/1997
(6)	17.00 ft on 04/18/1952
(7)	16.40 ft on 04/17/1951
(8)	15.81 ft on 04/01/2019 (P)
(9)	15.30 ft on 06/28/1993
(10)	14.91 ft on 05/01/1975

We also have at least 6 sump pumps running 24 hours a day to keep our basement dry. Besides flood prepping, our crew monitors pumps and dikes throughout the weekend and nights.

The chart on the right shows the history of crests. In 2016, the city built a bike trail through our property on the riverside. This trail raised our flood protection from 15.3 ft to 17.2 ft. This was a huge improvement to protect our facility.

In 2019, the Red Wing flood crest projection was 20.5 ft. (1965 is the 100-year level) and we built a huge berm to protect the elevator 2 weeks in advance. Levee Road closes at 14-16 ft, so we must protect the facility before the water level reaches these levels. The 2019 level ended up cresting at 15.8 ft.

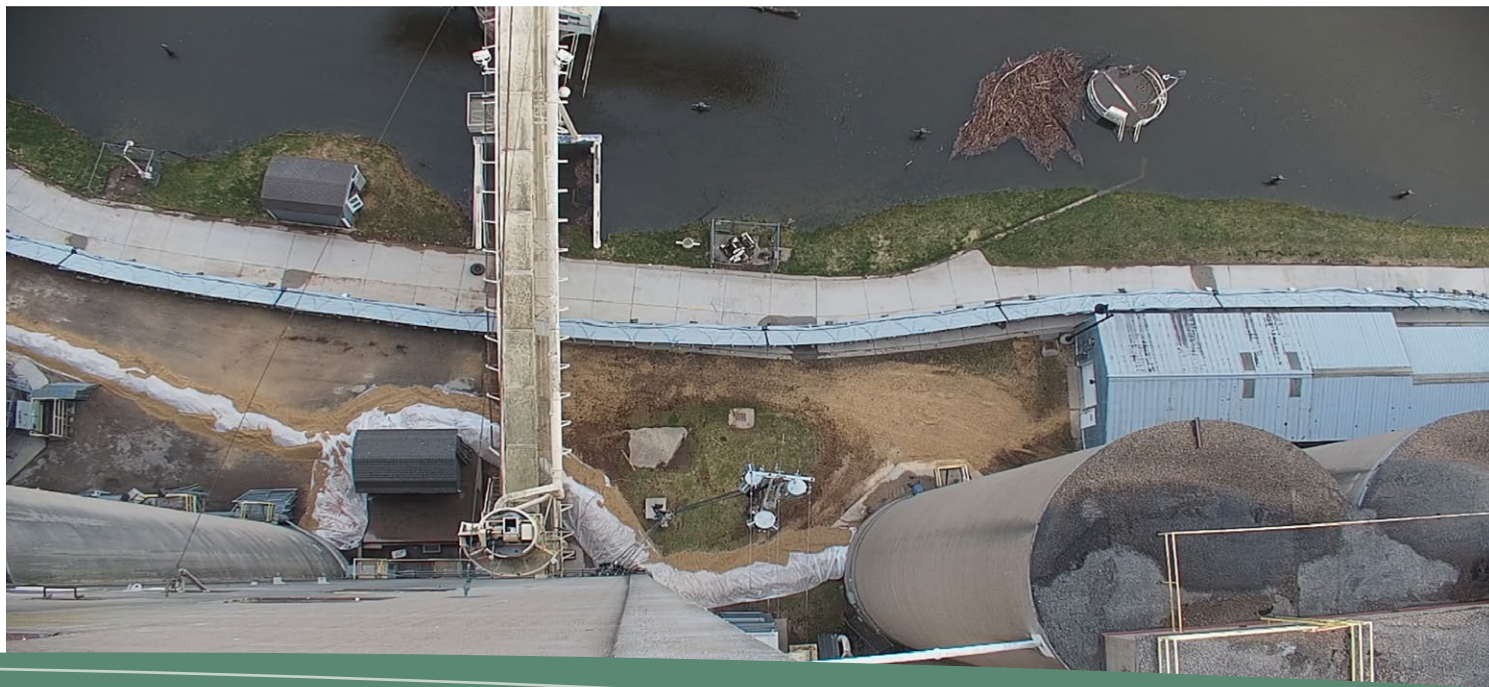
QUICK FACT:

The Red Wing River gauge is calculated by feet of zero elevation. The Elevation is 664.73 for NAVD88 at zero ft. To calculate the true elevation you would add the current river level to this number.

Ag Partners #FarmerStrong

Agronomy	Farm Supply	Log in
Feed	Grain	Careers
Energy	Cash Bids	Weather

This year the crest prediction was near 18.5 ft. with the huge amount of snowfall up north and the quick meltdown from 80-degree temps. This spring, we invested in a Porta dam System that the U.S. Army Corps of Engineers use in many places. It is a simple framework system with a fabric to hold the water back. This wall is intended to protect up to an additional 4 feet, which would equate to a 21 ft river level for our facility. Our crew can install this wall in 1 day. The photos below show the framework installation and after the fabric is added. The photo on the far right shows the river when it is 15.7 ft. which would have been over the road before the trail was built up in 2016. The last photo (below) is a bird's eye view showing some secondary diking around the back side of the elevator with the river level around 15.7 ft.





Show Feeds now available at Lewiston

And much more upon request!



600 Debra Dr.
Lewiston, MN 55952

507-523-2188



Sunglo 18-G
Sunglo 16-G
Sunglo Smooth
Purina Ultra Full
Purina Depth Charge
Purina Champion Drive



Find your career with Ag Partners

Or share this with someone you know!

Competitive Pay
Job Training
Benefits

Full-Time
Part-Time
Seasonal

Visit
agpartners.net/careers today!

Recipe Corner: Strawberry Cream Dessert

Try with different flavors!*

Yields 12-15 bars

2 1/4 C. graham cracker crumbs

6 T. sugar

10 T. butter, melted

1 pkg. (8 oz.) cream cheese, softened

1 C. confectioners' sugar

24 oz. whipped topping, divided

1 pkg. (3 oz.) strawberry gelatin

1/2 C. boiling water

1 C. strawberry yogurt

Topping:

2 T. graham cracker crumbs

1 1/2 t. sugar

1 1/2 t. butter, melted



Recipe from Holly Roschen

In a bowl, combine cracker crumbs, sugar and butter. Press into an ungreased 9x13" dish. Refrigerate for 15 minutes. Meanwhile, in a mixing bowl, beat cream cheese and confectioners' sugar until smooth. Whisk in 1 cup whipped topping. Spread over the prepared crust.

In a large bowl, dissolve gelatin in boiling water. Whisk in yogurt and 6 cups of whipped cream topping until blended. Pour over cream cheese layer. Refrigerate for 1 hour. Spread remaining whipped topping over the strawberry layer. Cover and refrigerate overnight. Just before serving, combine graham cracker topping ingredients and sprinkle over the whipped topping layer.

Cut into bars, serve and enjoy!

*Other suggested flavors: lime, lemon, orange.

Goodhue General: 651-923-4496

Feed Orders: 651-923-6001

Energy Line: 651-923-6004

By location: agpartners.net/about

Ag Partners #FarmerStrong

Agronomy

Feed

Energy

Farm Supply

Grain

Cash Bids

Log in

Careers

Weather